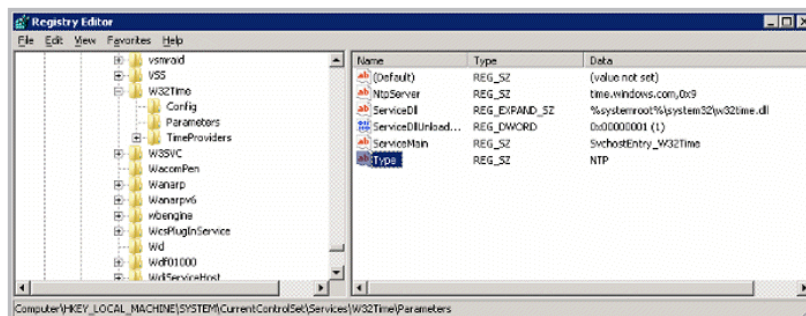


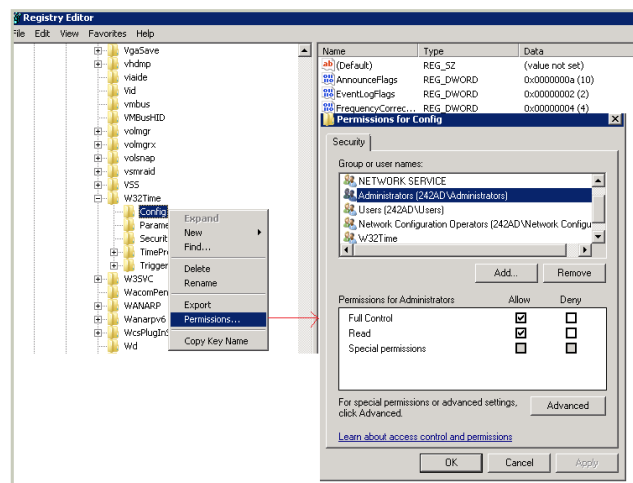
How to enable NTP Server in Windows Time service

In general, this service is enabled by default for Windows Server or DT Research's Edge Server, but not for other systems used as WCM server. Please follow the instructions below to enable this function on your WCM server so players will be synchronized automatically or manually with publish server.

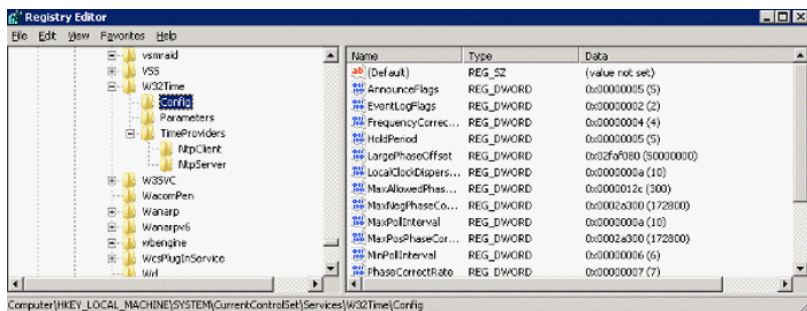
1. Change the server type to **NTP** as the steps below. (If the type is NTP already, this step can be ignored.)
 - I. Click **Start**, type **regedit** in the field of **Search Programs and Files**, then click **enter** to show **Registry Editor**.
 - II. Locate and click **HKEY_LOCAL_MACHINE\SYSTEM\CurrentControlSet\Services\W32Time\Parameters**
 - III. In the right pane, right-click **Type**, then click **Modify**.
 - IV. In **Edit DWORD Value** window, type **NTP** in the **Value data** box, then click **OK**.



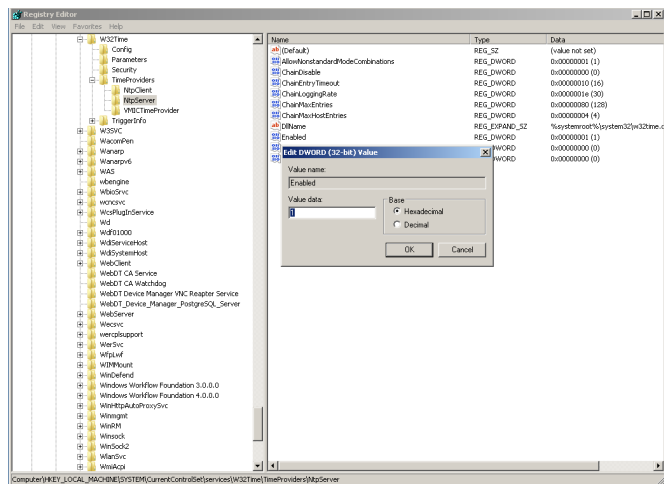
2. Add **full control** privilege of **administrators group** for **Config** as below.
 - I. **HKEY_LOCAL_MACHINE\SYSTEM\CurrentControlSet\Services\W32Time\Config** Right click **Config**, click **Permissions...**, open **Permissions for Config** dialog.



- II. In dialog, click **Add...** button, add **administrators group**, check **Full Control** and **Read** permission, then Click **OK**.
3. Set **AnnounceFlags** to **5**. Follow the steps below:
 - I. Locate and click **HKEY_LOCAL_MACHINE\SYSTEM\CurrentControlSet\Services\W32Time\Config**
 - II. In the right pane, right-click **AnnounceFlags**, then click **Modify**.
 - III. In **Edit DWORD Value** window, type **5** in the **Value data** box, then click **OK**.



1. Add **full control** privilege of **administrators group** for **Config** for **HKEY_LOCAL_MACHINE\SYSTEM\CurrentControlSet\Services\W32Time\TimeProviders** and **HKEY_LOCAL_MACHINE\SYSTEM\CurrentControlSet\Services\W32Time\TimeProviders\NtpServer**
2. Enable **NTPServer** as the steps below.
 - I. Locate and click
HKEY_LOCAL_MACHINE\SYSTEM\CurrentControlSet\Services\W32Time\TimeProviders\NtpServer
 - II. In the right pane, right-click **Enabled**, then click **Modify**.
 - III. In **Edit DWORD Value** window, type **1** in the **Value data** box, then click **OK**



3. Quit Registry Editor.
4. At the command prompt, type the following command to restart the Windows Time service, then press ENTER:
net stop w32time && net start w32time
5. Change the startup type of Windows Time service (W32Time) to **Automatic**.
6. Restart WCM server. Then your signage players in the same LAN will synchronize with your server now.

NOTE:

If you'd like to specify the dedicated time server, please follow the steps below.

1. Stop WCM web server service.
2. Go to C:\Program Files\DT Research\WebDT Content Manager\Web Server\webapps\publish\WEB-INF\classes
3. Open **ps.properties** with Notepad.exe
4. Input the IP address into the string "#TimeServer,assign this means player would synchronize with the timeserver timeserver=**192.168.1.1**", in this case, 192.168.1.1, is an example.
5. Restart WCM web server service.