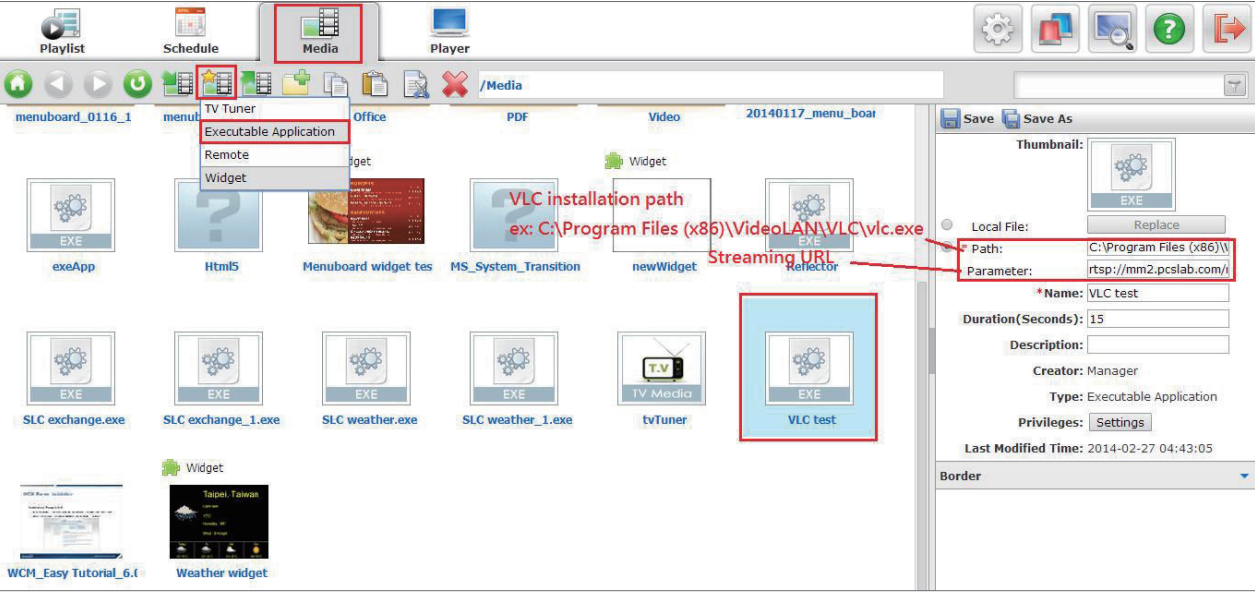


How to play streaming video via Remote URL

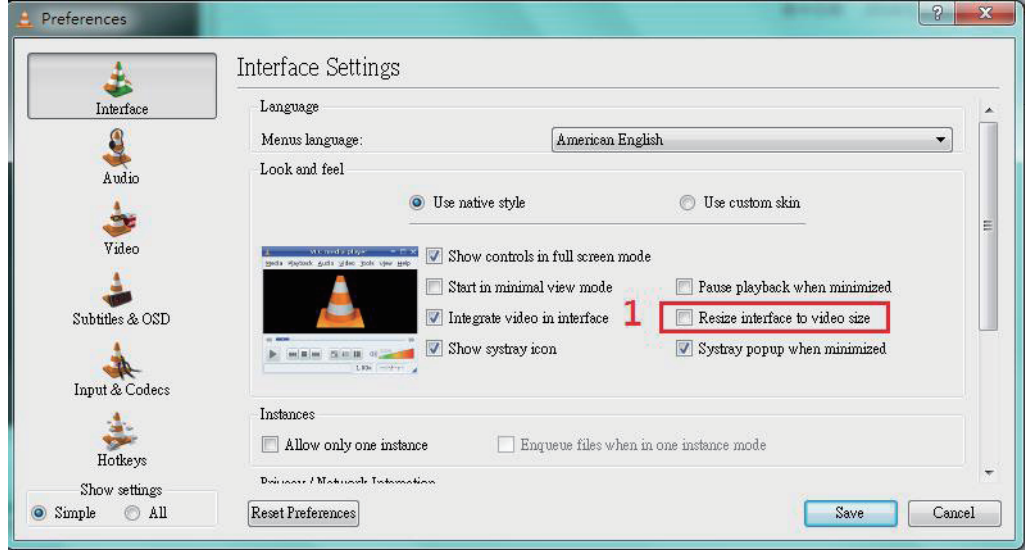
The current supported video streaming protocols in WCM6.0 Pro are RTSP and MMS (rtsp:// or mms://). The supported video encoding formats are WMV and ASF. If the selected video streaming protocols or encoding formats are not supported, please try using 3rd party streaming player (like VLC) to play the remote URL via Executable Application:

Step 1: Create an executable application and make sure the path & parameter are correct:

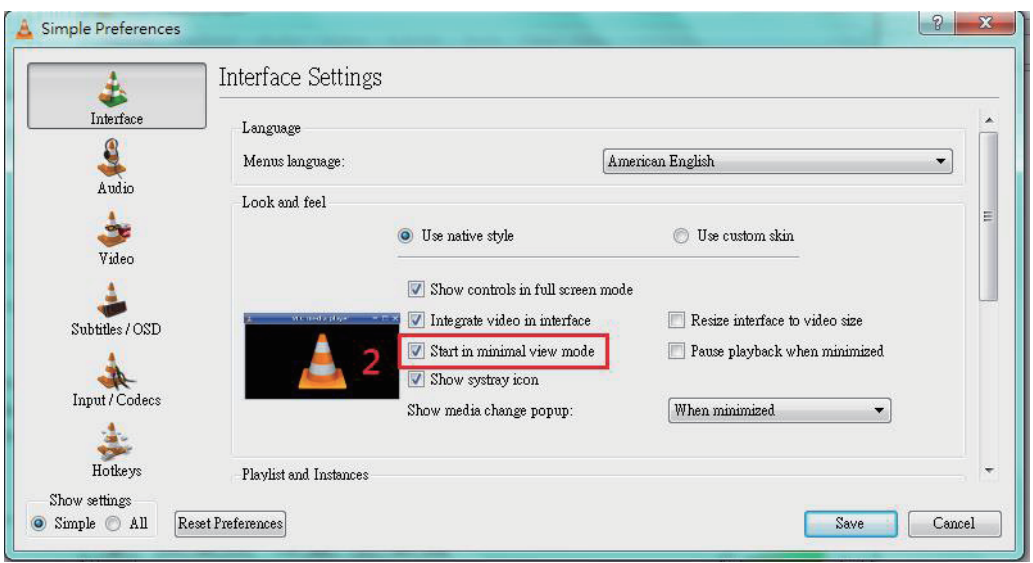


Step 2: Follow below steps in VLC player Preference Settings to fit the VLC player with the defined zone size:

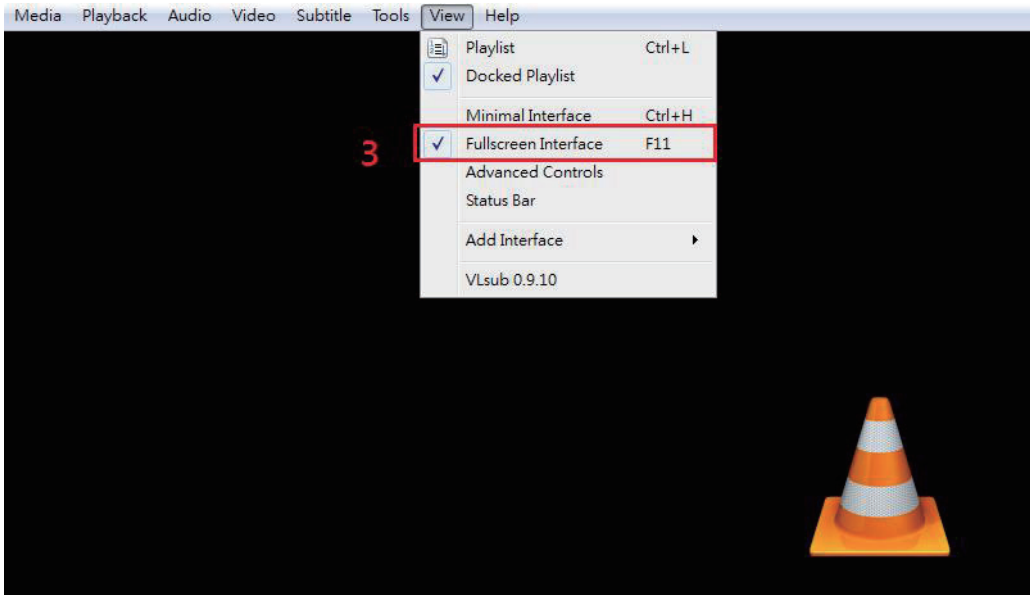
A. DO NOT check the checkbox of "Resize interface to video size"



B. Select "Start in minimal view mode"



C. Select "Fullscreen Interface"



D. Close VLC player and run WebDT Signage Player.